

AT

sistema de batente de 45mm com corte térmico

45mm opening system with thermal break

système de battante de 45mm avec pont thermique



SISTEMAS
EURO 2000[®]
PERFIS DE ALUMÍNIO E VIDROS PARA ARQUITECTURA

apresentação

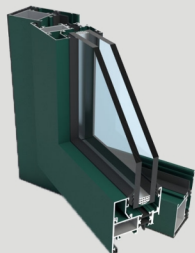
presentation

présentation

Sistema de corte térmico projetado para combater as amplitudes térmicas existentes no território nacional. O sistema AT proporciona elevados benefícios com reduzido investimento.

Thermal break system designed to overcome thermal amplitudes on national ground. This system provides high benefits from reduced investment.

Système de pont thermique conçu pour combattre contre les variations de températures sur le territoire national. Ce système offre des hautes prestations avec un faible investissement.





características

features

caractéristiques

Apresentação: Reta | Redonda | Decorativa | Oculta
 Presentation | Straight | Round | Decorative | Concealed
 Présentation | Droite | Arrondie | Décorative | Caché

Aro Fixo: 45 mm | 52 mm | 59 mm | 70 mm | 77 mm
 Fixed frame | Cadre fixe

Aro Móvel: 45 mm | 52 mm
 Mobile frame | Cadre mobile

Enchimento: De 4 a 39 mm | From 4 to 39mm | De 4 à 39 mm
 Filling | Remplissage

Vedação: Junta em EPDM
 Insulation | Étanchéité | EPDM joints | Joint en EPDM

Poliamida: 15 mm
 Polyamide | Barretes

Peso máximo por folha: Maximum weight/ leaf | Poids maximale/ vantail

Janela batente (int./ext. 1|2 Folhas) - 150 Kg
 Casement (in/out 1|2 leaves) | Fenêtre à la Française (int/ext 1|2 vantaux)

Porta batente (int./ext. 1|2 Folhas) - 180 Kg
 French door (in/out 1|2 leaves) | Porte (int./ext. 1|2 vantaux)

Oscilo-batente | Tilt and turn | Oscillo-battant - 150 Kg

Oscilo-paralela | Tilt and slide | Oscillo-couissant - 150 Kg

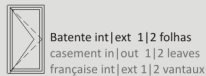
Projetante | Awning | à L'italienne - 120 Kg

Basculante | Hopper | à Soufflet - 70 Kg

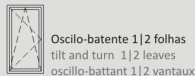
Pivotante Horizontal | Center pivot hor. | Basculante - 80Kg

Pivotante Vertical | Center pivot vert. | Pivotante - 60Kg

Harmónio | Fold | Accordéon - 80 Kg



Batente int|ext 1|2 folhas
 casement in|out 1|2 leaves
 française int|ext 1|2 vantaux



Oscilo-batente 1|2 folhas
 tilt and turn 1|2 leaves
 oscillo-battant 1|2 vantaux



Projetante
 awning
 à l'italienne



Basculante
 hopper
 à soufflet



Pivotante horizontal
 center pivot horiz.
 basculante



Pivotante vertical
 center pivot vert.
 pivotante



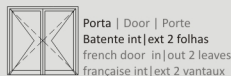
Harmónio 3|4|5|6|7 folhas
 fold 3|4|5|6|7 leaves
 accordéon 3|4|5|6|7 vantaux



Oscilo-paralela
 tilt and slide
 oscillo-couissant

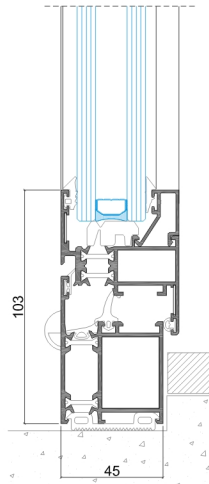


Porta | Door | Porte
 Batente int|ext 1 folha
 french door in|out 1 leaf
 française int|ext 1 vantail

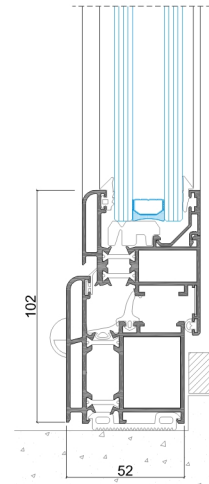


Porta | Door | Porte
 Batente int|ext 2 folhas
 french door in|out 2 leaves
 française int|ext 2 vantaux

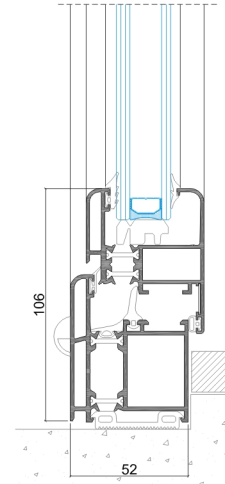
Linha Reta
 Straight
 Droite



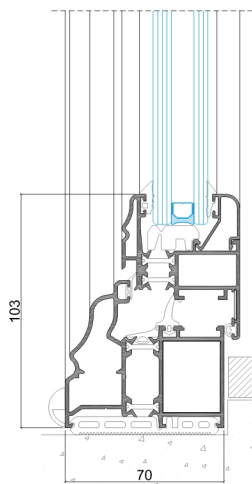
Linha Redonda
 Round
 Arrondie



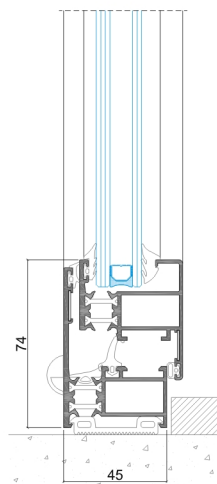
Linha Redonda sem bite
 Round without glazing beads
 Arrondie sans parclose



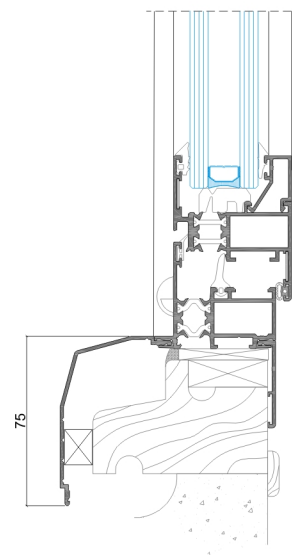
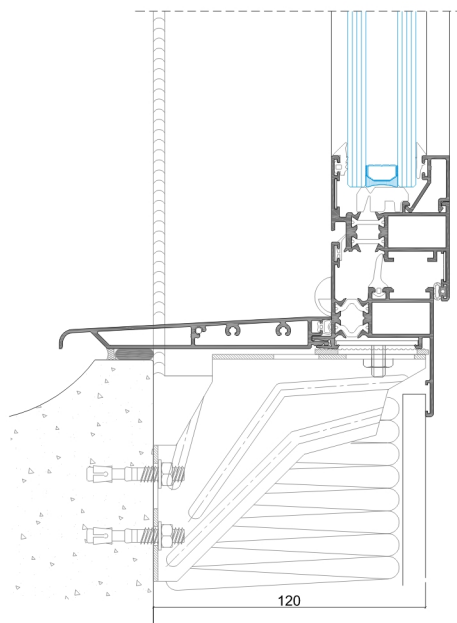
Linha Decorativa
Decorative
Décorative



Linha Oculta
Concealed
Caché



Linha *Renovatio* - Soluções para renovação
Renovatio - Solutions for renovation
Renovatio - Solutions pour rénovation



acabamentos

finishes
finitions

Lacados (disponível em catálogo de cores, Grupo Sosoares)

Lacquer (available on colour catalog, Group Sosoares)

Laqué (disponible dans le catalogue des couleur, Groupe Sosoares)

Anodizados (disponível em catálogo de cores, Grupo Sosoares)

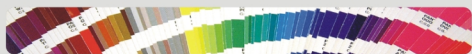
Anodizing (available on colour catalog, Group Sosoares)

Anodisé (disponible dans le catalogue des couleur, Groupe Sosoares)

Bicoulores (diferente cor/tratamento entre interior exterior do caixilho).

Bicolour (different colour / treatment between inside and outside the frame).

Bicouleur (couleur différente / traitement entre l'intérieur et l'extérieur du cadre).



marcação CE

CE marking

marquage CE



Resultado de ensaio | Test results | Résultats des tests
NP EN 14351-1



Características | Features | Caractéristiques **Classificação**
Janela de 2 folhas com 1.60m x 1.40m
2 leaves window with 1.60m x 1.40m
Fenêtre 2 feuilles avec 1.60m x 1.40m
Classification
Classification

Permeabilidade ao AR

AIR Permeability
Perméabilité à l'AIR

4

Estanquidade à ÁGUA

WATER Tightness
Étanchéité à l'EUA

E750

Resistência ao VENTO

WIND Resistance
Résistance ao VENT

C5

Coef. Transm. TÉRMICA

THERMAL Transmittance
Coef. de Transmission THERMIQUE

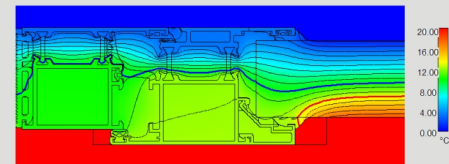
Uw = 1,86 W/m² K
Ug=1,1W/m²K (Janela 2 folhas
2 leaves | 2 feuilles: 1.60x1.40m)

Isolamento ACÚSTICO

ACOUSTIC Insulation
Isolation ACOUSTIQUE

Rw janela(dB)= 36dB

Rw vidro (IGU) = 36dB, área <= 2,70m²
Rw verre(IGU)=36dB, surface <= 2,70m²





SISTEMAS
EURO 2000®
PERFIS DE ALUMÍNIO E VIDROS PARA ARQUITECTURA

SOSOARES

Rua do Campo Alegre, 474
4150-170 Porto
T +351 226 096 709 | F +351 226 005 642
E comercial@sosoares.pt

METALFER

Travessa do Bolegão, 146
Apartado 1
3754-904 Fermentelos
T +351 234 729 740 | F +351 234 729 741
E metalfer@sosoares.pt

ALFA SUL

EN Lisboa-Sintra Km 14
Apartado 156
2726-936 Mem Martins
T +351 219 265 090 | F +351 219 265 098
E alfa.sul@sosoares.pt

ALULIDER

Pavilhão Industrial H - Plataforma 13D
Zona Franca Industrial
9200-047 Caniçal - Madeira
T +351 291 960 494 | F +351 291 960 497
E alulider@sosoares.pt

PERFIS OEIRAS

Rua da Colónia - Quinta da Cardosa
Apartado 214 - Abrunheira
2711-952 Sintra
T +351 219 156 660 | F +351 219 156 661
E perfis.oeiras@sosoares.pt

www.sosoares.pt

